



MADE IN THE USA

TITAN[®] DECK

Walk all over us. We can take it.



www.TitanDeck.net

A Product of **voyager**
INDUSTRIES



WALK ALL OVER US. WE CAN TAKE IT.

Titan Deck® engineered so your decking will be the last thing on your mind. Made of 100% polypropylene, Titan Deck will not fade, cup, rot, peel, blister or break under normal use and weathering. It is a UV-protected, bare-foot friendly decking that stays cool in extreme temperatures and fits most docks and piers.

Titan Deck products are covered by a **Lifetime Limited Warranty**.

WHAT'S INSIDE

A Product of Voyager Industries	2	Applications & Uses: Commercial	6
Why Choose Titan Deck?	3	Titan Deck Overview	7
Re-deck with Titan	4	Board Selections/Features	8
Applications & Uses: Residential	5	Product Specifications	10



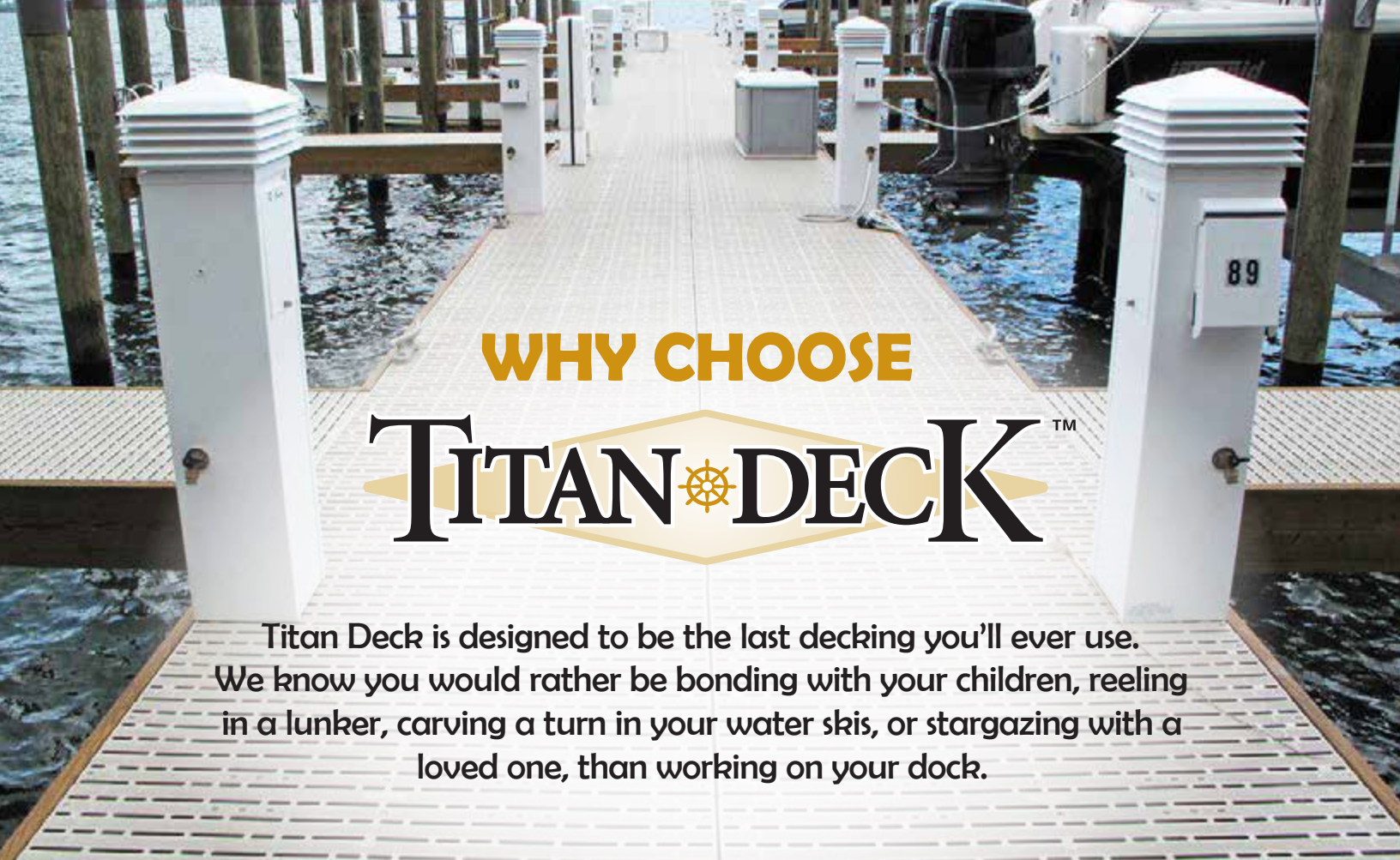
A PRODUCT OF **voyager** INDUSTRIES

voyager-industries.com
800-980-4940

About Us

Located in the heart of the Minnesota lakes area, Voyager Industries is a leading manufacturer, distributor, and fabricator of aluminum. Voyager Industries manufactures multiple products to meet the wants and needs of customers around the world.

Proprietary brands include **Titan Deck**, **Yetti Fish Houses™**, **Bear Track Trailers™**, and **Voyager Dock®**. In 2004, with many of their customers being in the waterfront industry, Voyager recognized the need for an alternative to aluminum and wood dock decking. After much effort in designing and redesigning, Voyager created the ultimate deck board, one that is strong, durable and stylish, ***Titan Deck***.



WHY CHOOSE TITAN DECK™

Titan Deck is designed to be the last decking you'll ever use. We know you would rather be bonding with your children, reeling in a lunger, carving a turn in your water skis, or stargazing with a loved one, than working on your dock.



100% Polypropylene

Titan Deck is made out of 100% polypropylene, which is a sturdy plastic that will take everything you and Mother Nature can throw at it.



UV Protection

All Titan Deck products come with UV protection which will prevent significant fading. Titan Deck will also handle any wild weather changes. All Titan Deck materials have been tested in temperatures ranging from -25°F to 120°F (-32°C to 49°C).



Lifetime Limited Warranty

Titan Deck products are covered by a Lifetime Limited Warranty, so you know you're getting a product that will last.



Barefoot Approved

Titan Deck is designed with bare feet in mind. Your feet and even the smallest feet in your family will feel right at home on Titan Deck.



MADE IN THE USA

RE-DECK WITH TITAN

Restore your existing dock with new Titan decking.

If you have a dock with a solid structure but boards that are deteriorating, re-decking with Titan is a great and affordable option. Plus, all your neighbors will be jealous of your new look!

Contact a dealer near you to see how Titan Deck can be retrofitted to your dock or pier. Find a dealer at www.titandeck.net/find-dealer.



BEFORE



AFTER



BEFORE




AFTER



APPLICATIONS & USES

Titan Deck is ideal for many applications ranging from residential to commercial needs. With its maintenance-free, skid-resistant surface, it's no wonder Titan Deck is the first choice in so many industries.



Choose Titan Deck for the following projects:

Dock Systems
Ramps and Steps
Pathways
Decks
and Much More!

RESIDENTIAL

Small Dock Systems and Association Dock Systems





COMMERCIAL

Restaurants / Waterfront Businesses, Marinas and Piers

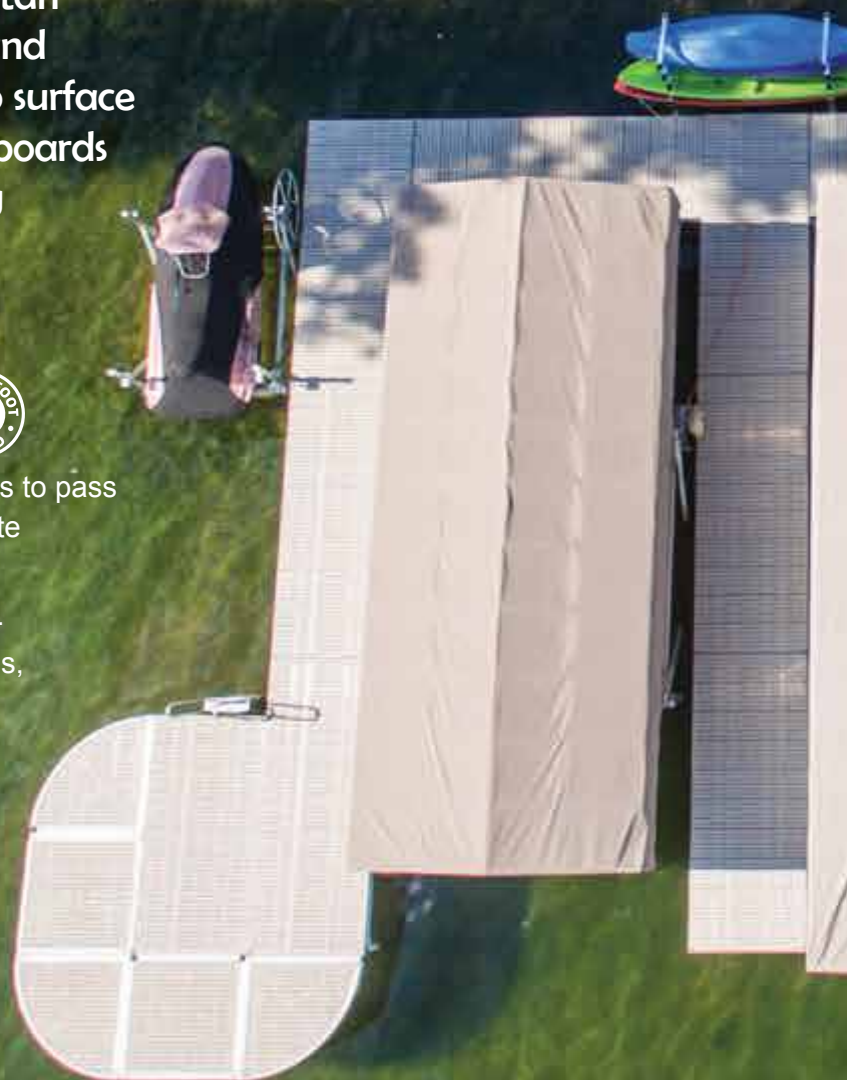


TITAN DECK OVERVIEW

Titan Deck will take everything you and Mother Nature can throw at it. All Titan Deck boards are maintenance free and environmentally safe, with a non-slip surface that is barefoot approved. Plus, the boards are UV protected to minimize fading over time.

Specifications

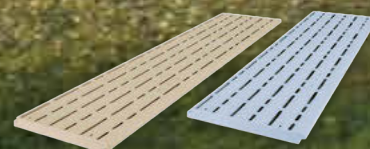
- Barefoot friendly, skid-resistant surface.
- Titan Deck's design allows dirt, sand and debris to pass through while also allowing sunlight to penetrate vegetation below.
- Strong, durable and virtually maintenance free.
- Design can minimize damage from wind, waves, high water and storm surge.
- Stays cool even in extreme temperatures.
- Titan Deck will not rot, curl, warp, dent, splinter or bend and never needs staining or painting.
- Titan Deck boards are made of injection molded polypropylene and comes with a lifetime limited warranty.
- UV-protected to minimize fading.
- Add aluminum stiffeners for more stability



BOARD SELECTIONS

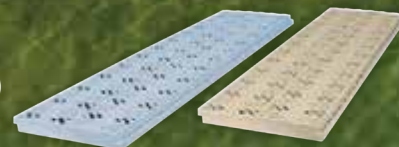
Titan Classic *(available in reinforced)*

Available in 2', 3', 4' and 5' Lengths
(60.90cm, 91.44cm, 121.92cm, 152.40cm)
Depth: 1.125" (2.86cm) | Width: 12" (30.48cm)



Titan X-Series *(available in reinforced)*

Available in 2', 3', 4' and 5' Lengths
(60.90cm, 91.44cm, 121.92cm, 152.40cm)
Depth: 1.5" (3.81cm) | Width: 12" (30.48cm)



Titan Open-X Series

Available in 3', 4' and 5' Lengths
(91.44cm, 121.92cm, 152.40cm)
Depth: 1.5" (3.81cm) | Width: 12" (30.48cm)
Offers 47% open area which meets most US government regulations for open area and light penetration.



Product Features

- Two Standard Colors: Mushroom & Gray
- Up to 16" (40.64cm) centers non-reinforced
- Up to 24" (60.96cm) centers need reinforced

Titan decking is manufactured in individual boards for flexible and easy install. Boards can also be assembled into panels which allows for easy removal for winter or for easy access to dock utilities such as electrical and plumbing.

A young girl with blonde hair, wearing a green one-piece swimsuit, is captured mid-air performing a backflip off a wooden dock. She is upside down, with her legs tucked and arms extended. Water droplets are visible around her, suggesting she has just jumped or is about to land. The dock is made of light-colored wooden planks with dark metal fasteners. In the background, there is a calm body of water, a line of green trees, and a distant lighthouse under a bright, cloudy sky. The overall scene conveys a sense of summer fun and outdoor recreation.

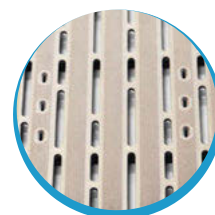
**YOUR MEMORIES LAST
A LIFETIME. SO SHOULD
YOUR DECKING.**

PRODUCT SPECIFICATIONS

Titan Classic

Our most popular board, the Classic Series style, is Titan Deck's original board. The Classic design is for those that prefer to keep it simple. The traditionalist who just loves a good-looking dock.

Titan Classic Series	Panel Size	Span	Depth	Weight
Non-Reinforced	24" (61.00cm)	16" (40.64cm)	1.125" (2.86cm)	3 lbs (1.36 kg)
	36" (91.44cm)	16" (40.64cm)	1.125" (2.86cm)	5 lbs (2.27 kg)
	48" (112.92cm)	16" (40.64cm)	1.125" (2.86cm)	7 lbs (3.18 kg)
	60" (152.40cm)	16" (40.64cm)	1.125" (2.86cm)	8 lbs (3.63 kg)
Reinforced	24" (60.96cm)	24" (60.96cm)	1.125" (2.86cm)	5 lbs (2.27 kg)
	36" (91.44cm)	24" (60.96cm)	1.125" (2.86cm)	7 lbs (3.18 kg)
	48" (121.92cm)	24" (60.96cm)	1.125" (2.86cm)	9 lbs (4.08 kg)
	60" (152.40cm)	24" (60.96cm)	1.125" (2.86cm)	11 lbs (4.99 kg)



**Board width is 12" (30.48cm) for all sizes.*

Titan X-Series

The X-Series is for the boater who prefers a more modern design. With its X shape built into the boards this design is quickly gaining popularity. Offering the same features as our Classic boards, the X-Series design is for the consumer that wants the neighbors to take notice.

Titan X-Series	Panel Size	Span	Depth	Weight
Non-Reinforced	24" (61.00cm)	16" (40.64cm)	1.5" (3.81cm)	3 lbs (1.36 kg)
	36" (91.44cm)	16" (40.64cm)	1.5" (3.81cm)	5 lbs (2.27 kg)
	48" (112.92cm)	16" (40.64cm)	1.5" (3.81cm)	7 lbs (3.18 kg)
	60" (152.40cm)	16" (40.64cm)	1.5" (3.81cm)	8 lbs (3.63 kg)
Reinforced	24" (60.96cm)	24" (60.96cm)	1.5" (3.81cm)	5 lbs (2.27 kg)
	36" (91.44cm)	24" (60.96cm)	1.5" (3.81cm)	7 lbs (3.18 kg)
	48" (121.92cm)	24" (60.96cm)	1.5" (3.81cm)	9 lbs (4.08 kg)
	60" (152.40cm)	24" (60.96cm)	1.5" (3.81cm)	11 lbs (4.99 kg)



**Board width is 12" (30.48cm) for all sizes.*

Titan Open-X Series

The Open X-Series is the X-Series design with more open area, 47% to be exact. Open X-Series boards are used mostly by consumers in regions where there are government regulations on open area or that have strong winds, waves, high water or storm surges. Although with its modern design, more consumers are choosing the Open X-Series for its sleek style.

Titan Open X-Series	Panel Size	Span	Depth	Weight
Non-Reinforced	36" (91.44cm)	16" (40.64cm)	1.5" (3.81cm)	5 lbs (2.27 kg)
	48" (121.92cm)	16" (40.64cm)	1.5" (3.81cm)	6 lbs (2.72 kg)
	60" (152.40cm)	16" (40.64cm)	1.5" (3.81cm)	8 lbs (3.63 kg)
Reinforced	N/A	N/A	N/A	N/A



***With 47% Open Area, Titan Open X-Series meets most U.S. Government regulations for Open Area.*

**Board width is 12" (30.48cm) for all sizes.*

TITAN[®] DECK[™]

Walk all over us. We can take it.

2021 Voyager Industries, Inc. LIT301 Rev. E. 10/21. All written and visual data contained in this document are based on the latest product information available at the time of publication. Voyager Industries reserves the right to make changes at any time without notice. All other brand names or marks are used for identification purposes and are trademarks of their respective owners.