



Titan Deck Installation Instructions

Last Updated: 5/29/2019

Thank you for purchasing Titan Deck. If you have any questions or concerns, please contact your dealer or the Titan Deck customer service team. Normal hours are 8:00AM to 4:30PM Monday to Friday CST.

- Phone: (877) 207-4136
- Email: info@titandeck.net

Equipment Needed

- Tape Measure
- Level
- C clamps or hand clamps
- Impact driver or screw gun
- Appropriate drive bits based on type of board and screw being used (see fasteners needed section for appropriate screw based on board type).
- Spacer
 - o 3/16" (.4763 cm) is ideal spacing however 1/8" (.3175 cm) will work but will require additional boards over longer spans.

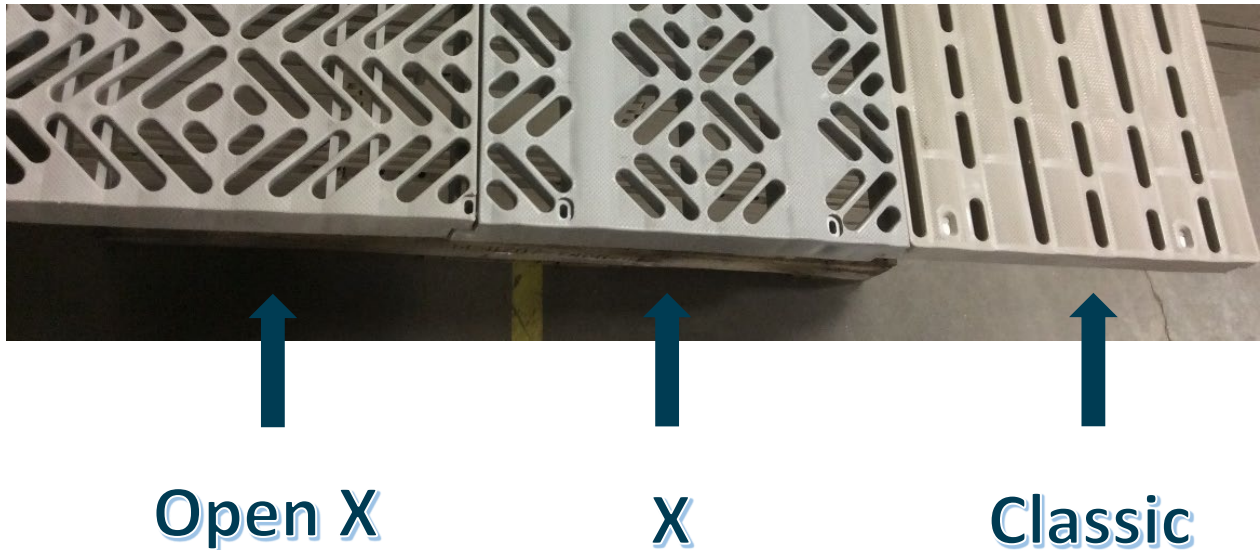
Materials Needed

- Titan Deck boards
 - o Each Titan Deck board is 12".
 - o Determine length of dock or pier and factor in spacing. 3/16" (.4763 cm) will not require additional boards if installed correctly. When spacing 1/8" (.3175 cm) additional boards and cutting will be required. See below for details.
 - At 1/8" spacing, a run up to 200' (60 m) will require 1 additional board which may need to be cut.
 - At 1/8" spacing, runs 200'+ (60 m) will require 2 or more extra boards (the last board may need to be cut to fit).
- Screws
 - o Size and screw type will vary based on board used (see fasteners needed section for appropriate screw based on board type).

Fasteners Needed

Determine the proper screws using the information below. Screw type will vary based on Titan Deck board pattern and material you are mounting the decking to. You can purchase the screws shown below from Titan Deck. Alternatively, you can source on your own or through Fastenal (Fastenal part number is included as well). We carry #12 screws however a #14 will work as well.

Identify your pattern:



	Classic	X-or Open X
Metal Surface	Self-Drive Flat head #12 x 1 ¾" SS Titan Part# HD-00580 Fastenal Part# 0175900 	Self-Drive Pan Head #12 x 2" SS Titan Part# HD-00583 Fastenal Part # 0176179 
Wood Surface	Flat head #12 x 2 ½" SS Titan Part# HD-00581 Fastenal Part# 0171869 	Pan Head #12 x 2 ½" SS (3" will work depending on application. Not stock) Titan Part# HD-00582 Fasten Part# 0171915 

Now that you have the necessary equipment and materials, you can install your Titan Deck.

Step 1:

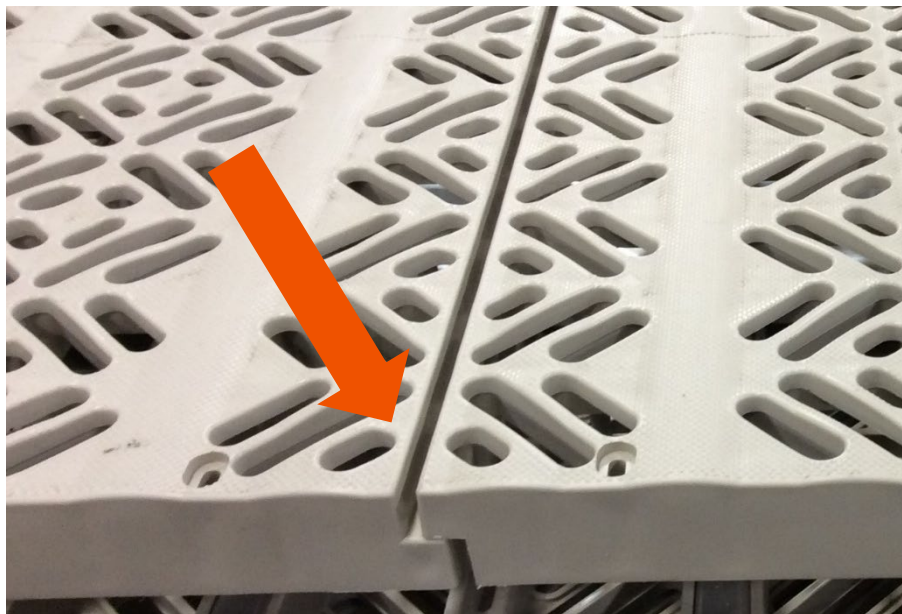
- For a new build, make sure structure is installed correctly, is stable and meets the specification of the Titan Deck board you purchased. Also, make sure the surface is level and clean.
- For a dock or pier that you are repairing or replacing decking; remove the old decking and clean away any debris from the top of the frame. Do any needed repairs to the frame and insure the dock is level. Also make sure it meets the specification of the Titan Deck board you purchased.

Step 2

- Measure the dock and determine the number of Titan Deck boards needed.
 - o Plan to use one Titan Deck board for each linear feet of dock when installed with 3/16" spacing. Using 1/8" spacing is popular but may require additional Titan Deck boards (refer to the Material Requirements section for more details).

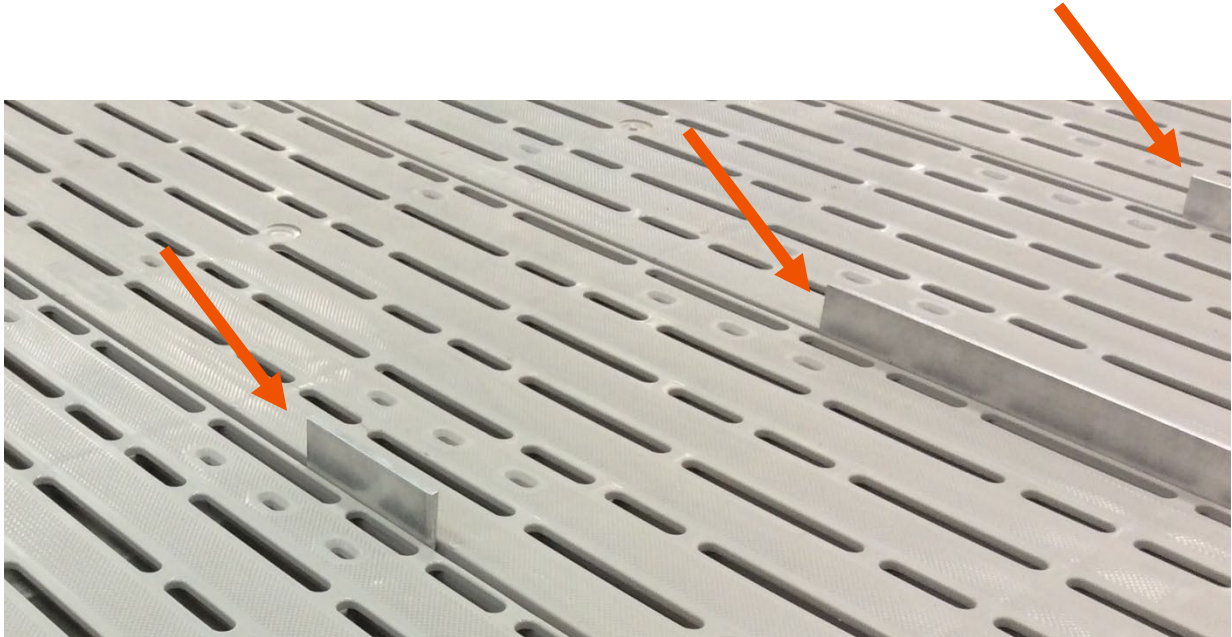
Step 3

- Layout the boards as shown below.



Step 4

- Place spacers between boards to allow for expansion. 3/16" is ideal however 1/8" spacers are common. Do not space boards more than 7/32" apart. The spacing may vary depending on your dock length. In some cases, you may need to trim a board width wise. You can use a skill or jig saw to cut Titan Deck. Reinforced Titan Deck will require a metal cutting blade.
 - You will want to make sure all ends are properly supported.
 - You may also need to add a finishing board to cover cuts. Typically, this is achieved with a skirt board.

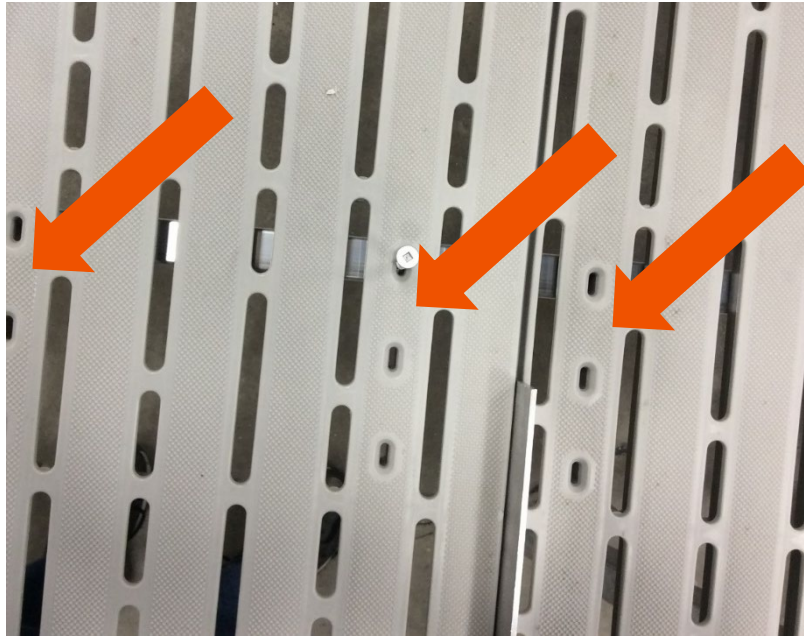


Step 5

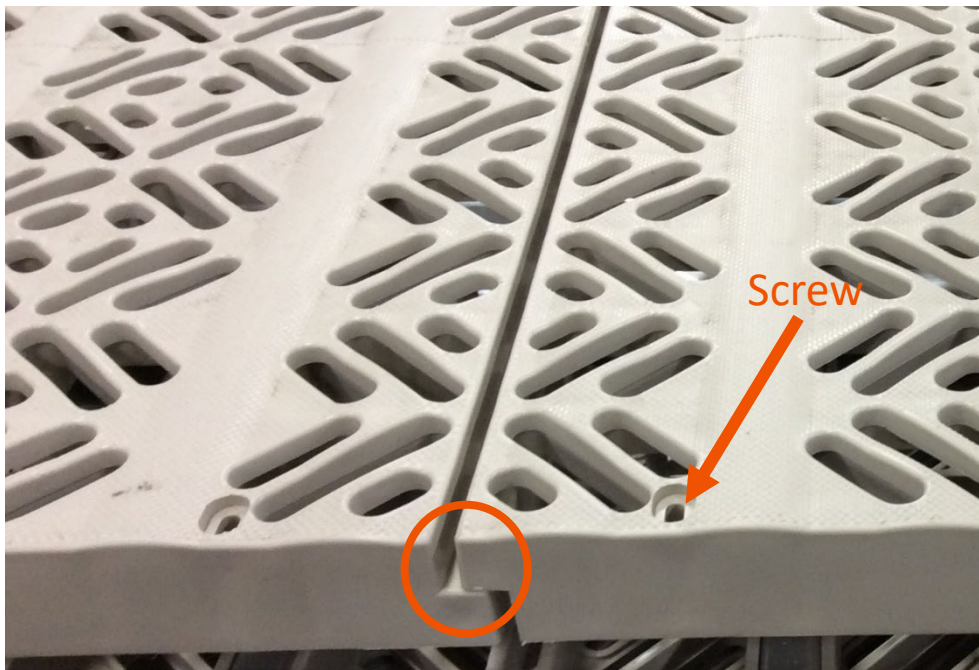
- Clamp the first board to the frame using the clamps.

Step 6

- Locate the spots where the frame stringers line up with the slots in the Titan boards. If you are using 5' Titan boards it is possible you may not screw down the decking at each stinger. You will use the outside edge and the center stringer.

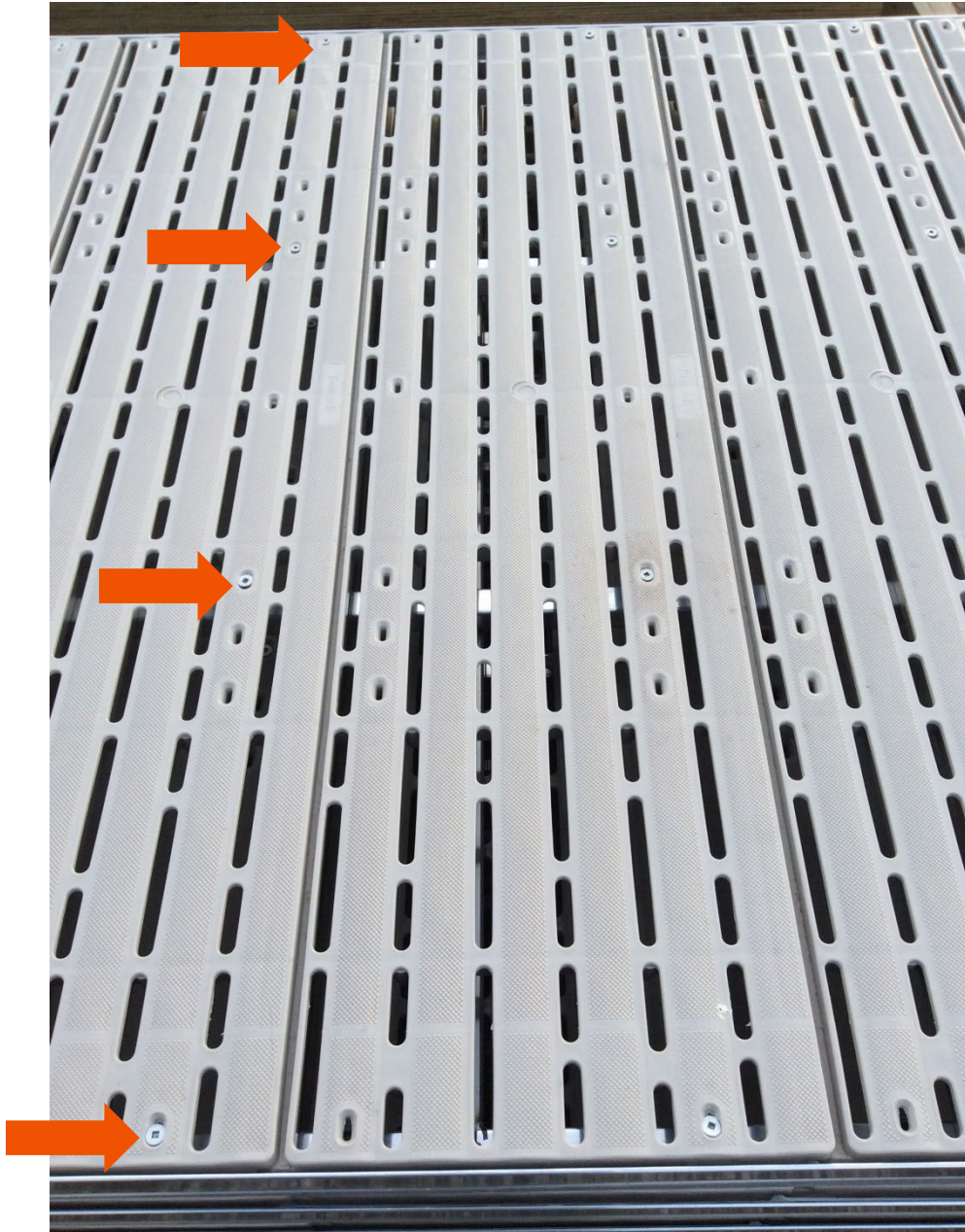


- The edge of the board that you want to secure to the frame is the edge with the protrusion on top. This tongue and groove design will save you time and fasteners as you don't need to use each screw port. In areas with higher tides or are prone to storm surge you may consider using more screw ports for additional strength.



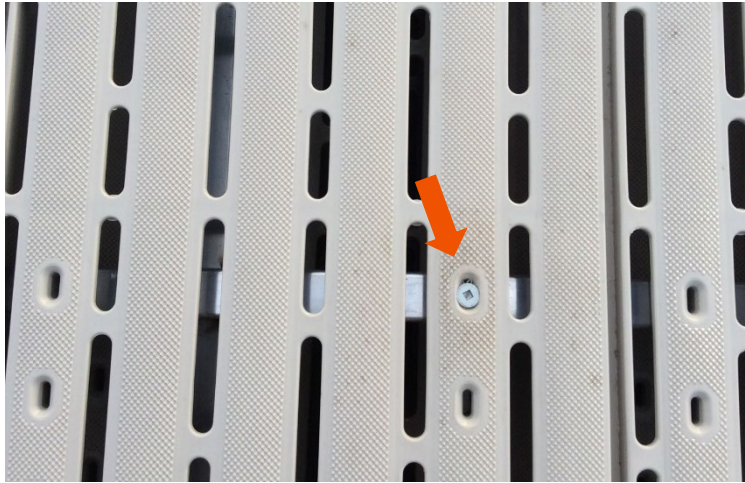
Note

- Each panel should be attached with screws across the same edge of the board. See step #7 for tightening instructions. Depending on your choice of Titan Deck, board size and stringer widths will determine how many screws will be used. The example below is 4' wide Titan on 16" center (board shown is Unreinforced Classic).



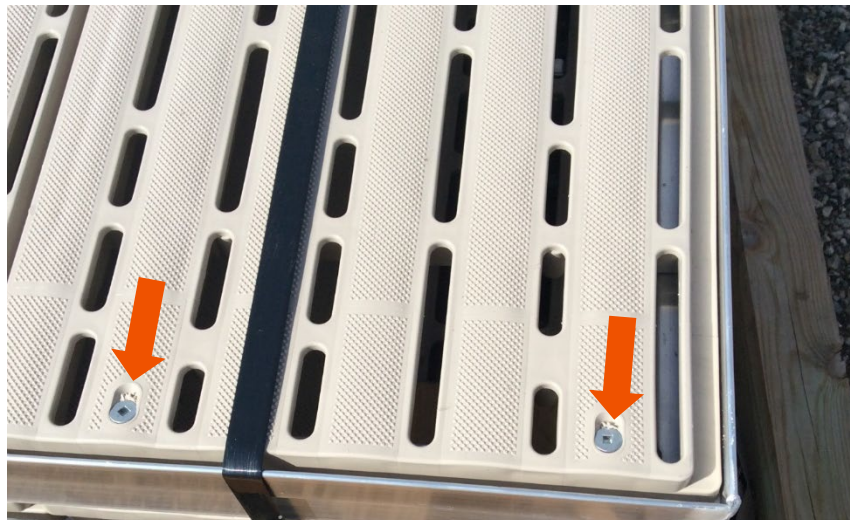
Step 7

- Using the appropriate screw based on your board and application, attach the Titan board to the frame. Screws should be tightened until the board is tight against the frame, but do not over-tighten. Screw head should be flush with, or just below the deck surface. Overtightening will not crack or break the decking; however, it may push the screw head through the decking and the board will not be fastened properly.



Step 8

- On the last Titan board, you will need to screw down the board on both the edge with the protrusion on top, and the edge with the protrusion on the bottom (opposite edge).



Step 9

- Remove the spacers from between boards and clean up.

Final step

- Relax and enjoy your beautiful, low maintenance Titan decking!

